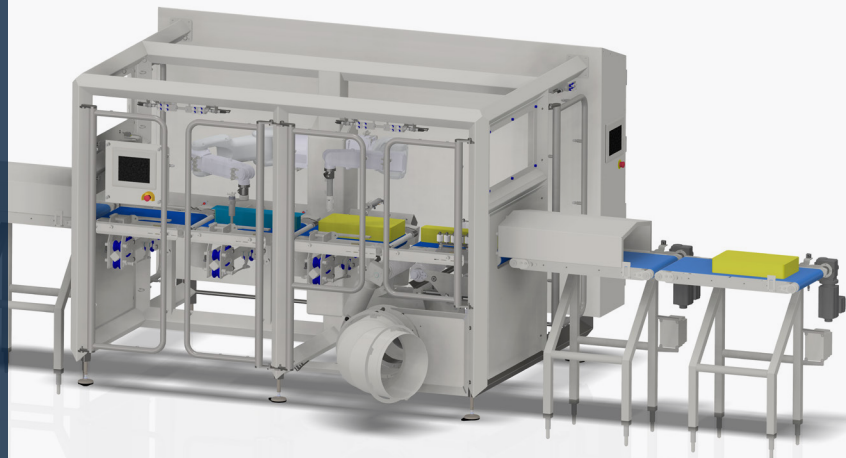


# ROBOTIC DE-BAGGER

DBMB



## Automates the removal of vacuum bags from multiple cheese block shapes and sizes.

Also known as the De-Bagger Multi-Block, or DBMB, the Robotic De-bagger is capable of managing virtually any block size or type on-the-fly, without operator input.

It safely and reliably removes the vacuum bag to present an undamaged, uncontaminated block to the processing line every time.

When combined with the Defect and Foreign Object Detection (DFOD) module, the system provides unprecedented confidence that product entering the processing line is in perfect condition, free from defects and plastic bag residue.

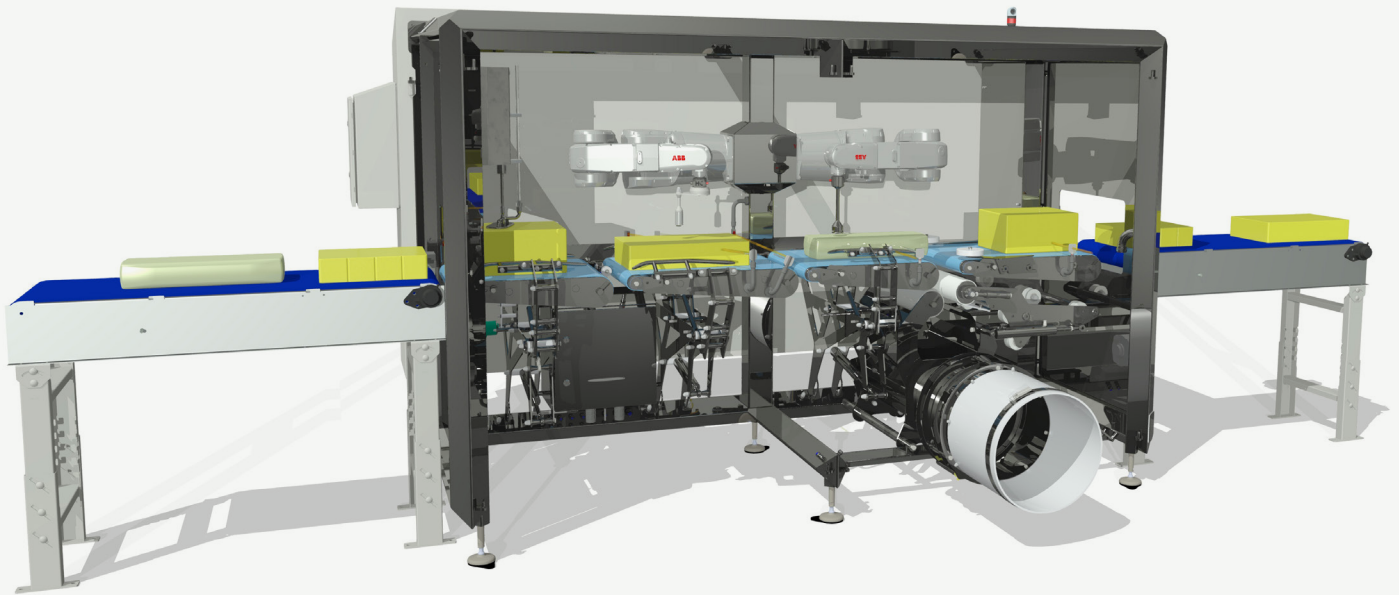


### BENEFITS

- > Reduced labour – allows staff to be re-deployed to higher value work
- > Risk of product contamination is removed
- > Manual handling, knives and the associated risk of injury to staff is eliminated
- > Waste plastic is managed efficiently
- > A single machine will handle multiple cheese formats

### FEATURES

- > Large processing envelope: 430w x 530l x 250h (16 ¾" x 20 ¾" x 10")
- > On the fly product recognition
- > Turnkey 24/7 operation
- > Low air consumption
- > Sanitary FDA design
- > 6 axis robots
- > IP69K CIP critical components
- > Easy access cartridge waste station
- > Meets NFPA 70 (NEC) and ANSI/RIA R15.06 standards
- > Fast easy access for wash down and maintenance



## CAPACITY

<b>Product</b>	Automatic block type detection
<b>Packaging</b>	Multiple bag types
<b>Product weight</b>	Up to 40kg (88lb)
<b>Rate</b>	8.5 blocks per minute, nominal (block dependent)
<b>Flexibility</b>	Dynamic product processing with defect compensation
<b>Waste</b>	600-plus bags per cartridge change

## EQUIPMENT

<b>Footprint</b>	2350mm W x 3400mm L x 2100mm H (93" W x 134" L x 83" H)
<b>Robots</b>	2 six axis robots
<b>End effectors</b>	Quick change helical grapple and blade
<b>Stations</b>	3 static slider beds 1 dynamic shuttling slider bed
<b>Actuators</b>	Mechanical or pneumatic option
<b>Waste removal</b>	Auger with removable housing and on-the-go changeover

## CONTROL

<b>PLC</b>	Allen Bradley
<b>Operator interface</b>	Allen Bradley PanelView
<b>Communications</b>	Ethernet/IP
<b>Alternative</b>	Client preferred hardware on request