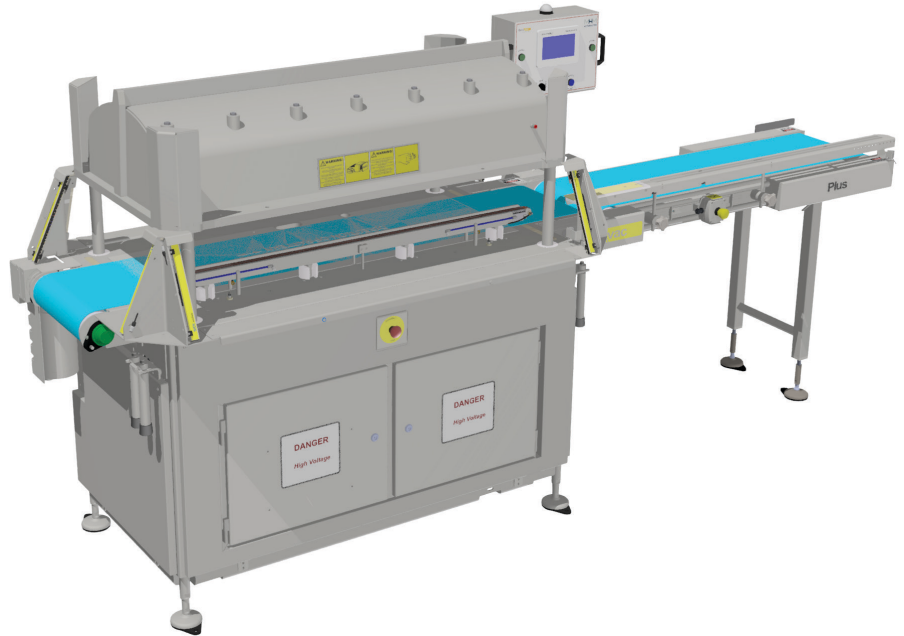


Beta vac

# SUPERIOR VACUUM PACKER



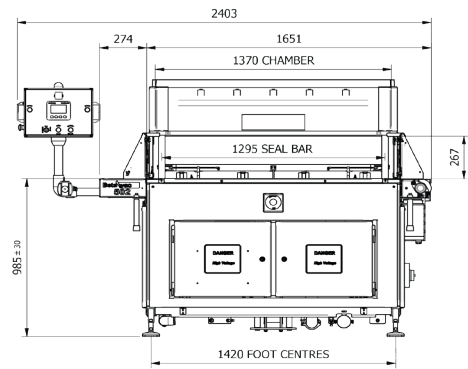
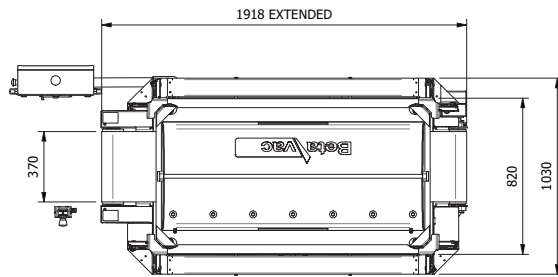
## The world's choice in cheese packaging systems.

For more than 30 years, the dairy industry has put its faith in the BetaVac design and rugged build quality. Hundreds of units have been installed worldwide with some of the biggest names in dairy. The BetaVac range can package 10kg/20lb cheese blocks, 20kg/40lb cheese blocks, cheese offcuts and other loose products.

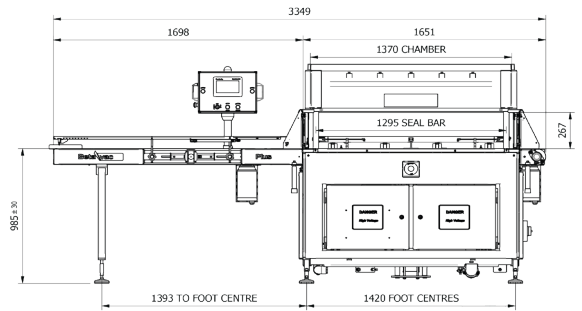
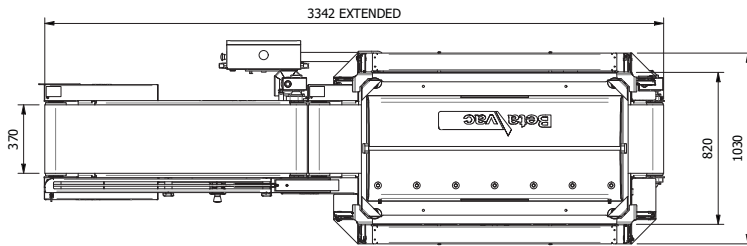
### FEATURES

- › Lid up lock system provides increased safety of the machine and is controlled by a safety PLC
- › The chamber is surrounded by light curtains on a twin safety rated circuit and is activated during lid movement
- › Independent safety PLC which controls and monitors all safety functions and passes safety related alarms and diagnosis information to the control PLC. This information is displayed on the HMI
- › Ethernet communication capability for data capture or interfacing to other plant components
- › Rugged stainless steel components minimise maintenance costs
- › Bag flap guide maintains correct presentation of the bags to the sealer
- › Fully automatic, pneumatic belt tensioner for ease of cleaning and joining of replacement belt
- › Stainless steel gear motors
- › Soft vent vacuum valves and silencer included, reducing noise exposure for operator's well-being
- › A machine's seal bar can be left or right handed
- › The Plus models have the added feature of regulated seal bar temperature via an electronic controller. It allows accurate and easy adjustment on the HMI
- › Plus models have the ability to run auto-calibration of the seal temperature controller from the HMI
- › Alarm history is logged on the HMI
- › Standard BetaVac units are fitted with a stainless steel base plate
- › Help menus for trouble shooting and setup
- › Temperature controller alarm conditions can be diagnosed from the HMI. Possible fault areas are displayed on a circuit diagram
- › All models equipped with Allen Bradley colour touch screen

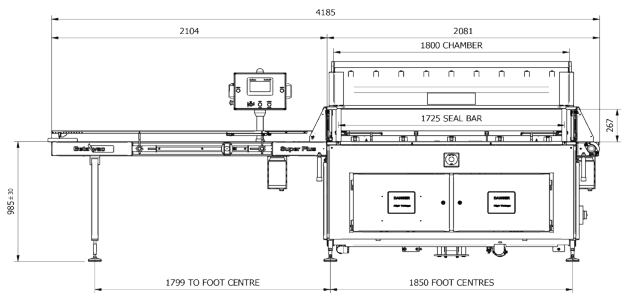
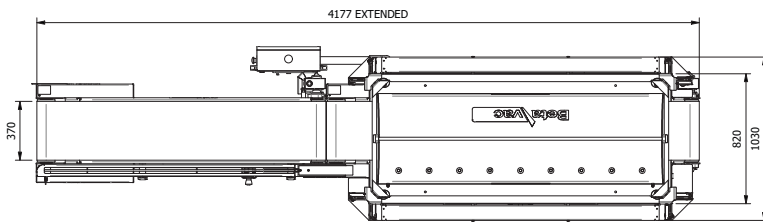
## BETAVAC 502



## BETAVAC PLUS



## BETAVAC SUPER PLUS



\*Models shown are left hand feed

### SPECIFICATIONS

	502	PLUS	SUPER PLUS
Product placing	Manual	Automatic	Automatic
Seal operation	Adj. Timer	Time/Temp	Time/Temp
Cusseted bags per cycle	4	4	5
Layflat bags per cycle (width mm)	2 x 500	2 x 500	3 x 522
Approx. cycles per minute	2.5	2.5	2.5
Max. product height (mm)	200	200	200
No. of seal bars and anvils	1	1	1

### ALL MODELS HAVE:

- Optional left hand or right hand feed
- Time or vacuum evacuation operation
- Adjustable anvil height
- Adjustable seal bar height
- Spare seal bar
- Water cooled seal bar
- Sealed edge conveyor belt
- Pneumatic belt tensioner