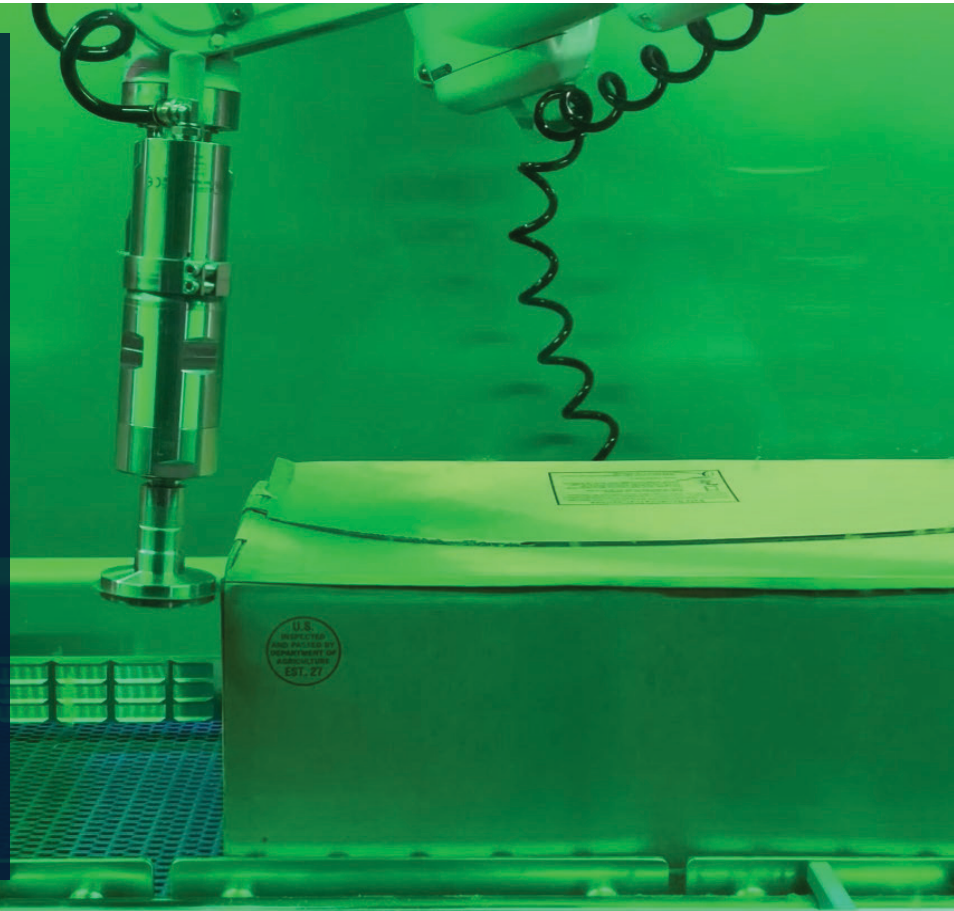




UNIVERSAL ROBOTIC BOX CUTTER

UBC



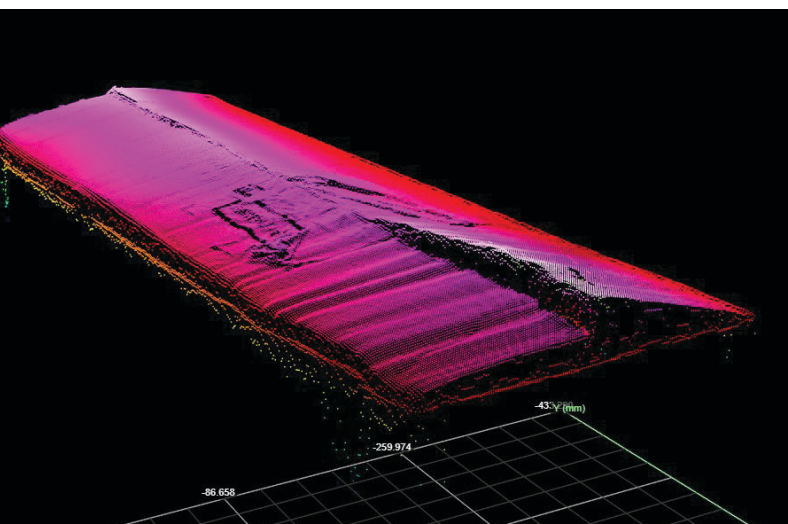
Open boxes of varying shapes and sizes the safe, hygienic and efficient way with the H&C Universal Robotic Box Cutter.

Also known as the Universal Box Cutter, or UBC, this machine has been developed to remove the need for operators to manually open boxes using knives.

The UBC uses vision technology to scan the box and determine its size and shape. Information is then passed to the robot to make adjustments to the cut profile, on the fly, without the need for operator intervention.

BENEFITS

- › A single machine which handles multiple box formats at the same time
- › Operator input not required for box size and shape changes
- › Reduces labour requirements, allowing staff to be re-deployed to higher value work
- › Eliminates manual handling, knives and the associated risk of injury
- › Hands-free operation removes risk of product contamination
- › Capable of handling damaged boxes
- › Capable of cutting box straps and bands
- › Sanitary design for use in high hygiene areas, with full wash down capability



^ The UBC scans a damaged box and adjusts accordingly to accurately cut it open.

FEATURES

The UBC uses vision technology to scan the box and determine its size and shape. Information is then passed to the robot to make adjustments to the cut profile, on the fly, without the need for operator intervention.

Integrated MCC and HMI

CIP cleanable

Full safety enclosure and interlocked access doors

Can be used as a standalone solution or integrated into a larger system, including de-palletising and product unloading

SPECIFICATIONS

Machine dimensions	3370 x 1800 x 2100mm (11' x 6' x 7')
Box weight	22-40kg (50-90lb)
Box dimensions	Length 150-820mm (6-32¼") Width 150-500mm (6-19½") Height 120-320mm (4¾-12½")
Operating temperature	0-45°C (32-113°F)
Throughput	Up to 8 boxes per minute
Noise level	85dB - requires hearing protection
Pneumatic supply requirement	550L/min at 6 bar (950CFM at 88PSI)
Power requirement	480V 60Hz 3 phase and ground at 30A full load current
Wash down	Machine can be fully washed down, with optional spray bars supplied for CIP (clean in place)
Compliance	Meets or exceeds the following standards: Electrical NFPA 70, NFPA 79 3A Sanitary standards FDA approved materials IP69K, NEMA 4X