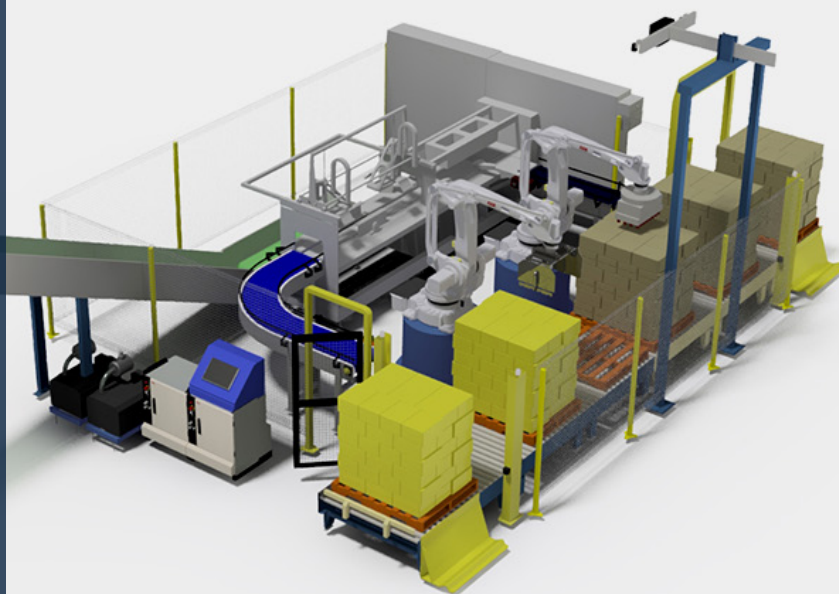


# DE-PALLETISE, DE-CARTON, RE-PALLETISE

DDRP-40



## De-palletise, de-carton and re-palletise 20kg / 40lb cheese blocks the efficient way.

Also known as the DDRP-40, the De-palletise, De-carton, Re-palletise system removes 20kg / 40lb boxes from a pallet, removes the boxes and re-palletises the bagged blocks again at a rate of up to 16 blocks per minute.

It features the unique, Three Dimensional De-palletising (3DD) vision system, which detects boxes of product in any configuration and enables optimal pick-up to deliver faster and more reliable de-palletising.

The DDRP-40 uses our superior cutting and carton removal technology to provide unparalleled reliability. It will safely remove the outer packaging, presenting an undamaged, wrapped block every time. With a proven track record in the industry, this is the best de-cartoning system available in the market today.

### BENEFITS

- › Improves line efficiency 24/7
- › Reduced labour – allows staff to be re-deployed to higher value work
- › Elimination of manual handling and the associated risk of injury to staff
- › Removed risk of product contamination
- › Reduced risk of accidentally cutting the bag
- › Waste corrugate managed effectively
- › Best in class footprint



## FEATURES

Operates effectively with liners

3DD vision system allows for randomly stacked pallets

Proven cutting and carton removal technology

Low energy consumption

Meets ANSI/RIA R15.06, AS 3000, AS 4024 safety & NFPA 70 (NEC) standards

Fast, easy access for maintenance

## CAPACITY

**Format** Wrap-around carton with liner

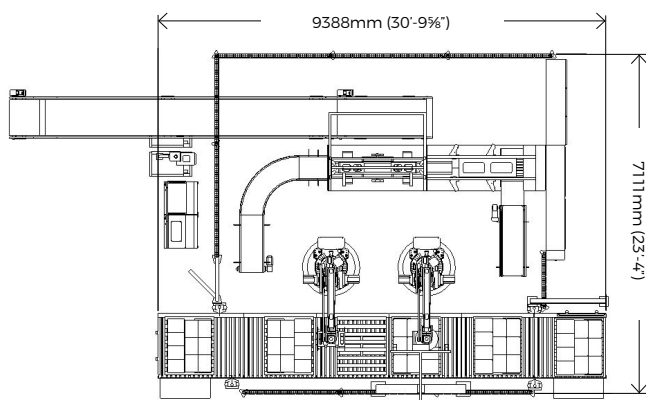
**Rate** Up to 16 boxes per minute

## EQUIPMENT

**Robots** 2 robots – 1 de-palletising and 1 re-palletising

**Vision system** 3 dimensional de-palletising (3DD) to detect cartons stacked in any configuration and enable optimal pick up

**End of arm tools** De-palletising has a vacuum head  
Re-palletising has a mechanical head



## CONTROL

**PLC** Allen Bradley

**Operator interface** Allen Bradley PanelView

**Communications** Ethernet/IP

**Alternative** Client preferred hardware on request