

AUTOMATED STORAGE & RETRIEVAL SYSTEM

ASRS



High performance ASRS shuttle and elevator system for frozen or chilled product.

The Automated Storage and Retrieval System (ASRS) revolutionises the storage and retrieval of frozen or chilled goods.

The system uses shuttle robots in a compact storage area, optimising space utilisation. This design eliminates the need for large shelving areas, increasing storage capacity without expanding the footprint.

The ASRS enables high-volume picking and storage by coordinating the movements of shuttle robots, with products being identified by SKU. This speeds up retrieval, reduces downtime, and boosts productivity.

By implementing this advanced technology, businesses can streamline logistics, manage inventory effectively, and meet the demands of the market.

We deliver our ASRS systems in collaboration with our technology partners TGW and Inther.

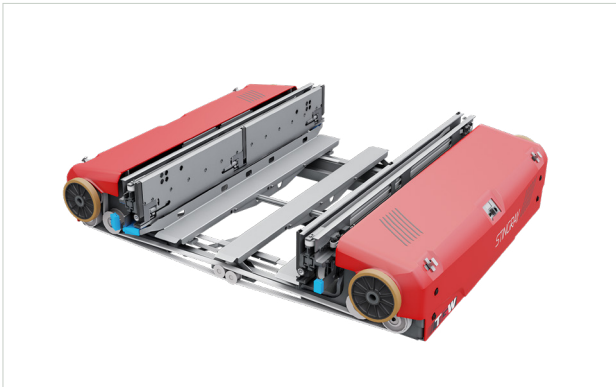
BENEFITS

- › Allows complete inventory management and integration with production and sales management systems.
- › High-speed elevators and live shuttle system for pallet consolidation and picking to order.
- › Proven performance in frozen and chilled environments
- › Eliminates manual handling and traceability issues.

FEATURES

- › High volume of product being moved in and out of storage
- › Plants with a range of SKUs
- › Sorting assorted product being received from the production line before storing
- › Picking product to create rainbow pallets
- › Available for use in either chilled or frozen environments

SHUTTLES



Stingray - Fixed or Variable Width

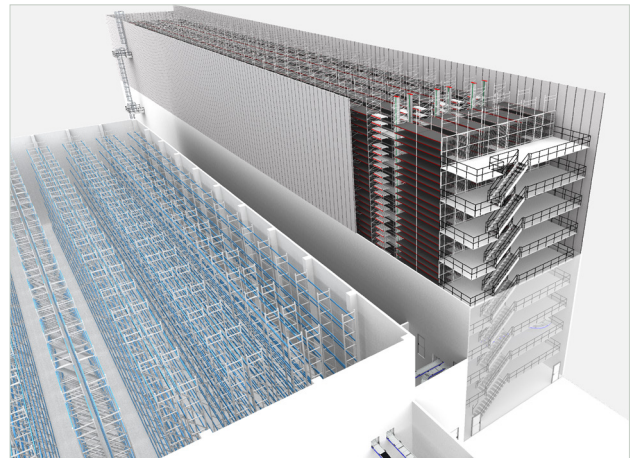
- › Totes, trays, cartons
- › Double or triple deep configurations available
- › 660 x 460 lengthways

TOTE LIFT



- › Carton and tote pick-up
- › Transport to the handover positions of the shuttle levels
- › Design as a single or double gondola for redundancy
- › Up to a height of 30m
- › Fully automatic transport for the maintenance function

RACK SYSTEMS



Free-Standing Rack Systems

Self-supporting steel and shelf construction within a building